



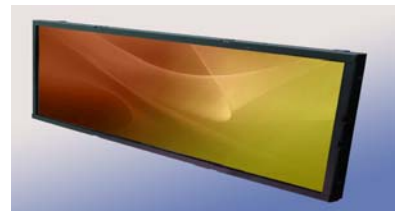
SSD2815

28" Resizing LCD, 1000 nits LED backlight, 1366x256 ultra wide aspect ratio 16:3

SSD2815 is an innovative ultra-wide, sunlight readable, LED backlight LCD display. It provides LCD panel with specific ratios for digital signage, public transportation, exhibition hall, department store, vending machine and industrial applications. Incorporating with A.D. control board and backlight design, it is high brightness and sunlight readable panel, can display high-quality video with energy-efficient.

Key Features

- Resizing LCD
- Ultra Wide Screen (16 : 3)
- Sunlight Readable
- LED Backlight
- High Brightness 1000 nits
- Low Power Consumption
- High Uniformity (90%)
- Wide Dimming
- Life Expectancy (70,000hrs)
- Slim Bezel



Specifications

Preliminary

Model No.	SSD2815
Description	28" Resizing LCD, 1000 nits LED backlight, 1366x256
Display Area	697.68 x 130.7 mm
Brightness	1,000 cd/m ²
Resolution	1366 x 256
Aspect Ratio	16 : 3
Contrast Ratio	2500:1
Pixel Pitch (mm)	0.51075 x 0.51075
Viewing Angle	176°(H), 176°(V)
Display Colors	16.7M
Response Time (Typical)	6.5 ms
Sync	LVDS
Power Consumption	TBA
Dimensions (mm)	723.7 x 155.4 x 54.7
Weight (Net)	TBA
LED Driving Board	LID28A01
Control Board (Optional)	AD2662GD / AD2662GDVAR
<input type="checkbox"/> AD2662GD	VGA + DVI
<input type="checkbox"/> AD2662GDVAR	VGA + DVI (Optional AV/ S-Video / Component / Audio)
<input type="checkbox"/> Others	
F / R Control Button	5 Key / 4 Key
<input type="checkbox"/> 4 Key	Power Switch, Menu, Select (+,-),
<input type="checkbox"/> 5 Key	Power Switch, Menu, Select (+,-),Auto
OSD Menu	Brightness, Contrast, H/V Position, Color, Phase, Clock...
Optional	<input type="checkbox"/> Touch Screen

Specifications are subject to change without notice.

All brands or product names are trademarks or registered trademarks of their respective companies.

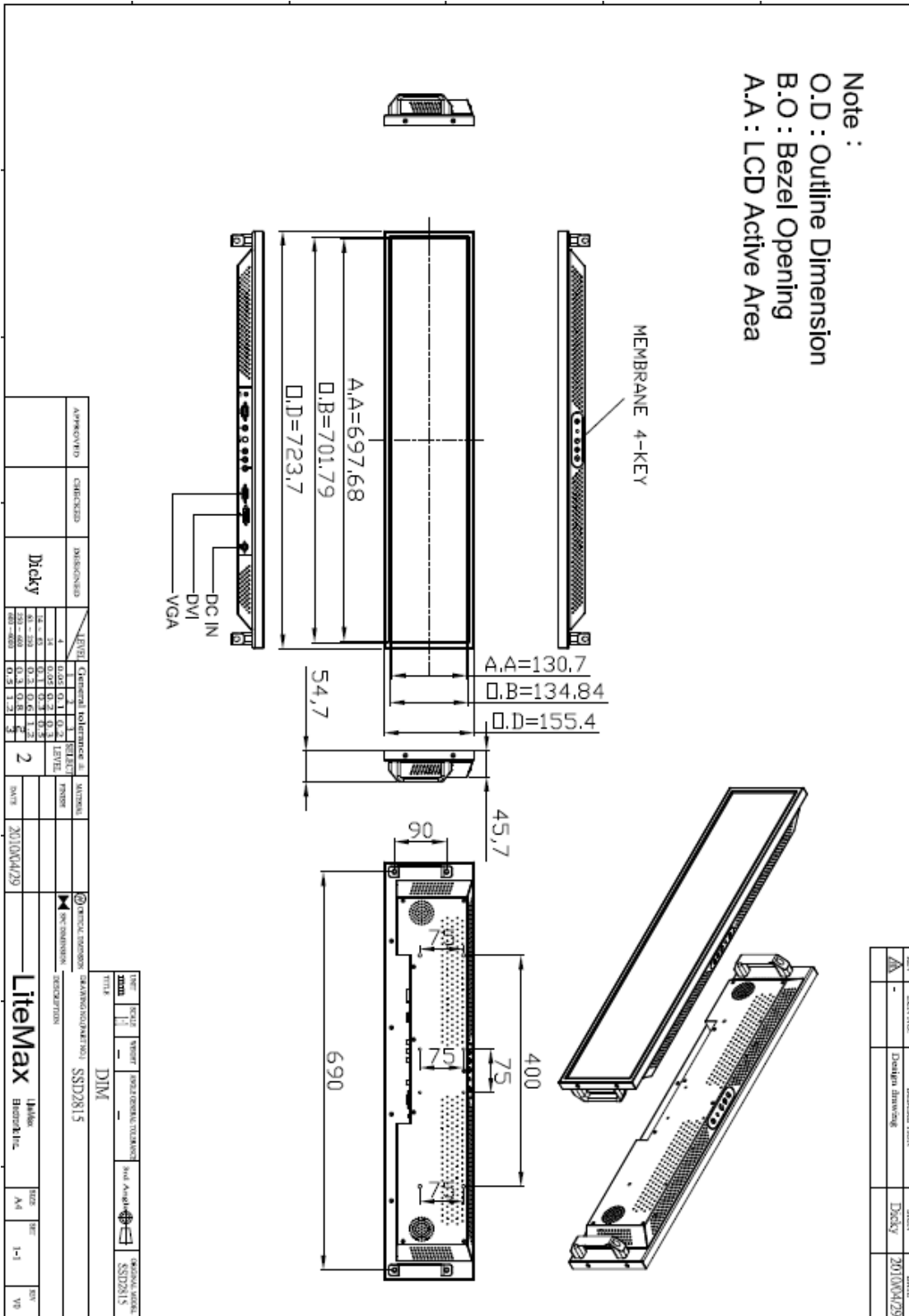
SSD = Panel + LED Driving Board + Control Board



Mechanical Drawing

Outline Dimensions

Unit: mm





Ordering Information

Model Name	Description

Optional Accessories

Part Number	Description